



## Natural Modern: Ridge Peak

Additional Platforms	Construction	Profile	Edge	Finish	Species	Grade
Herringbone and Chevron	Engineered	Tongue and Groove	Large Micro Bevel	Hard Wax Oil	European Mountain Oak	Character

Dimensions	Engineered (2 or 3 layers)	Solid
<b>Overall Thickness</b>	16mm (4+12), 21mm (6+15) [5/8", or 13/16"]	N/A
<b>Width</b>	185, 220mm [7' 5/16", or 8' 11/16"]	N/A
<b>Length</b>	400-2440mm - 80% > 1800mm [1' 3 3/4" - 8' 1/16". 80% of boards will be 5' 10 7/8"+]	N/A
<b>Underfloor Heating</b>	Suitable (Waterproof Boiled Birch Ply)	N/A

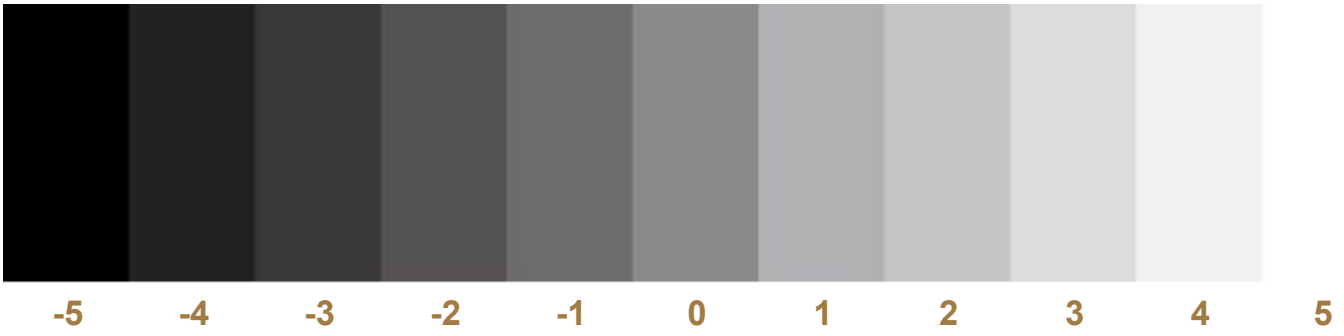
N.B. Custom sizes available. Please enquire.

### Tests

<b>Fire</b>	16mm - Dfl s1 21mm - Cfl s1	<b>Thermal Conductivity</b>	Oak: 0.17 W/mk Plywood: 0.16 W/mk
<b>Slip</b>	R9	<b>Formaldehyde</b>	E1


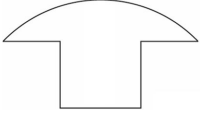
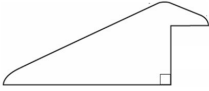
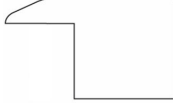
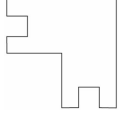
N.B. Sizes may change. All dimensionally specified criteria are visually checked and as such are to be taken as an approximation only.

# Tonal Variation



This product will exhibit natural colour variation because of the in depth colouring process. You can expect to see **tonal variation between -4 and -1** due to natural oxidation and reaction to the atmosphere, this product will tonally settle.

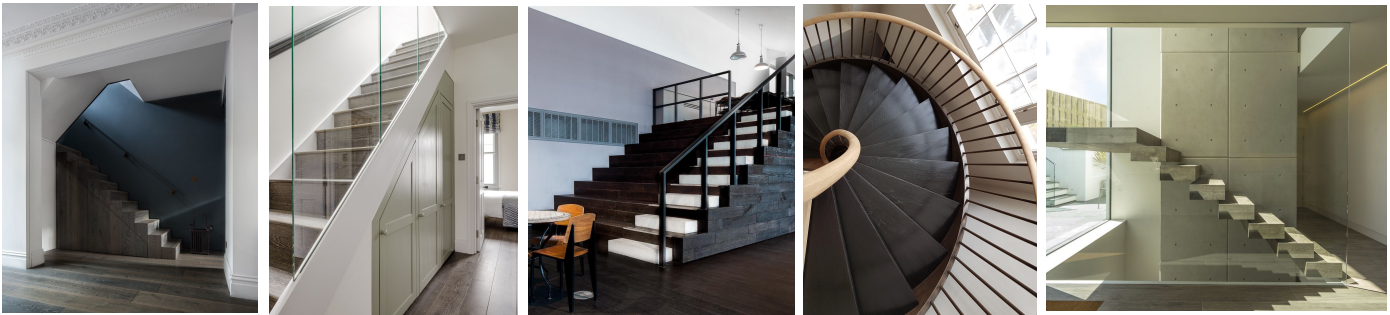
## Profiles & Accessories

<p>Bull Nose</p> 	<p>T Bar</p> 	<p>Ramp</p> 	<p>Stop End</p> 	<p>Square Nosing</p> 
---	--	---	--	--

N.B. Please inquire for availability. Our complimentary accessories will vary tonally due to the differing levels of tanning acids.

## Staircases

We offer the opportunity to customise stair tread and risers to complement our wood flooring.



## Sustainability & Certifications

FSC and PEFC	Timber Neutral	EUTR	LACEY ACT	Formaldehyde Emission
By Request	Yes	Legally Harvested	Legally Harvested	E1 (0.1ppm): complete compliance with EU safety standards



We OFF-SET your purchase. All trees are planted in audited reforestation programmes.

## Grading Chart

Grading	Character Grade (Standard)	Refined Grade (Non Standard)
<b>Species</b>	European Oak (Quercus Robur)	European Oak (Quercus Robur)
<b>Provenance</b>	Europe	Europe
<b>Base Layer</b>	Russia (Betula-Birch)	Russia (Betula-Birch)
<b>Max Open Knot Filled</b>	40mm [1 9/16"]	NA
<b>Max Closed Knot</b>	70mm [2 3/4"]	15mm (70% clean boards) [9/16"]
<b>Max Crack Size Filled</b>	Width of board maximum	NA
<b>Sapwood Content</b>	5%	NA
<b>Max End Checks</b>	100mm [3 15/16"]	NA

### Additional

It is typical to expect sapwood and heartwood within Character Grade product and as such allows for a wider range of colour variation throughout the floor when compared to a cleaner more refined grade. Knots are larger and cracks should be expected (see below for info). Complimentary filler will be used where required, filler colour may vary slightly between batches.

N.B. The product grading criteria should be taken as an approximation only and may vary. Please ask for further details.

## Final Presentation

All wood flooring products should be fitted in accordance with BS8201:2011 which is the 'Code of Practice for flooring of timber, timber products and wood-based panel products'. Failure to install in accordance with the British Standard installation instructions will void all warranties.

N.B. Please take NWFA standards for USA.

## Installation

<b>Fully Bonded</b>	Yes (Recommended)*
<b>Floating</b>	Not recommended
<b>Secret Nail</b>	Yes

\* Subject to compatible subfloor and correct installation (see our Installation Guidelines).

© This technical data sheet was written by The Reclaimed Flooring Company Limited, UK. At the time of writing and publication of the sheet, all information is specified correctly. The company reserves the right to change the specifications of this product at any time without prior notice to third parties.