

CABIN WOOD: PLANKS

COLLECTION: NATURAL MODERN



Additional Platforms	Construction	Profile	Edge	Finish	Species	Grade
Herringbone and Chevron	Engineered	Tongue and Groove	Bevelled Edge	Matt Lacquer	European Mountain Oak	Character

Dimensions	Engineered (2 or 3 layers)	Solid
Overall Thickness	16mm (4+12), 21mm (6+15) [5/8", or 13/16"]	N/A
Width	185, 220mm [7' 5/16", or 8' 11/16"]	N/A
Length	400-2440mm - 80% > 1800mm [1' 3 3/4" - 8' 1/16". 80% of boards will be 5' 10 7/8"+]	N/A
Underfloor Heating	Suitable (Waterproof Boiled Birch Ply)	N/A

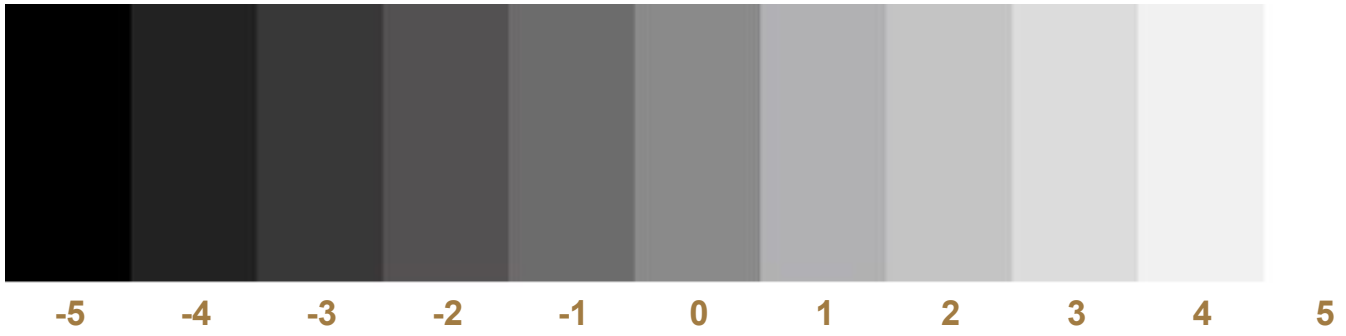
N.B. Custom sizes available. Please enquire.

Tests

Fire	16mm - Dfl s1 21mm - Cfl s1	Thermal Conductivity	Oak: 0.17 W/mk Plywood: 0.16 W/mk
Slip	R9	Formaldehyde	E1

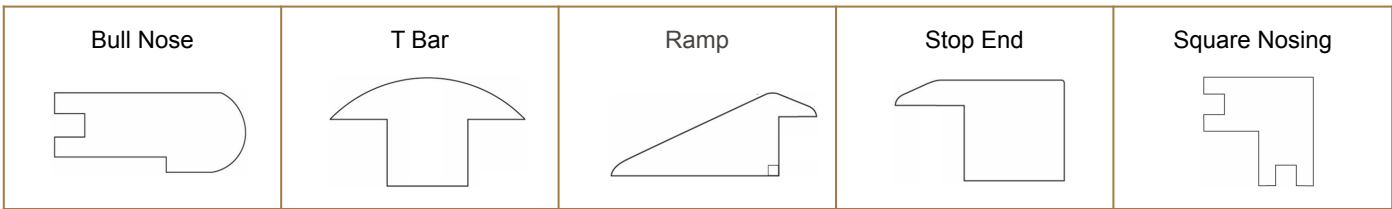
N.B. Sizes may change. All dimensionally specified criteria are visually checked and as such are to be taken as an approximation only.

Tonal Variation



This product will exhibit natural colour variation because of the in depth colouring process. You can expect to see **tonal variation between -4 and -1** due to natural oxidation and reaction to the atmosphere, this product will tonally settle.

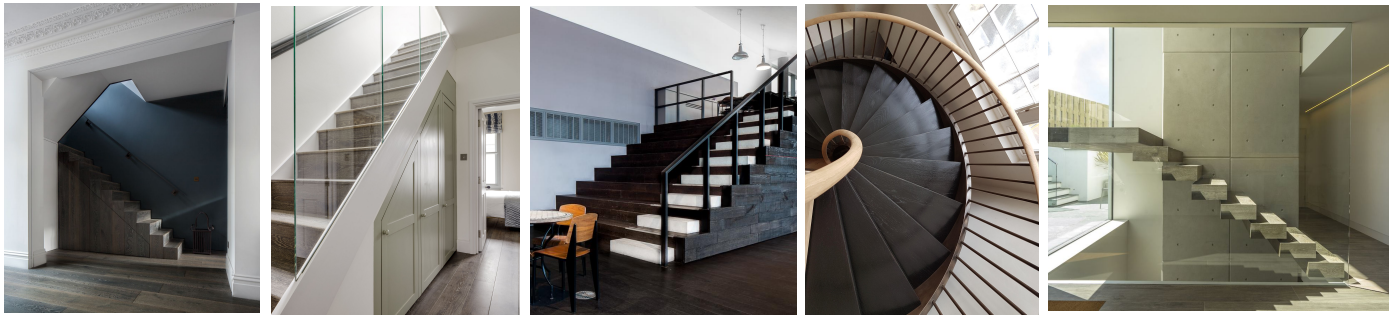
Profiles & Accessories



N.B. Please inquire for availability. Our complimentary accessories will vary tonally due to the differing levels of tanning acids.

Staircases

We offer the opportunity to customise stair tread and risers to complement our wood flooring.



Sustainability & Certifications

FSC and PEFC	Timber Neutral	EUTR	LACEY ACT	Formaldehyde Emission
By Request	Yes	Legally Harvested	Legally Harvested	E1 (0.1ppm): complete compliance with EU safety standards



We OFF-SET your purchase. All trees are planted in audited reforestation programmes.

Grading Chart

Grading	Character Grade (Standard)	Refined Grade (Non Standard)
Species	European Oak (Quercus Robur)	European Oak (Quercus Robur)
Provenance	Europe	Europe
Base Layer	Russia (Betula-Birch)	Russia (Betula-Birch)
Max Open Knot Filled	40mm [1 9/16"]	NA
Max Closed Knot	70mm [2 3/4"]	15mm (70% clean boards) [9/16"]
Max Crack Size Filled	Width of board maximum	NA
Sapwood Content	5%	NA
Max End Checks	100mm [3 15/16"]	NA

Additional

It is typical to expect sapwood and heartwood within Character Grade product and as such allows for a wider range of colour variation throughout the floor when compared to a cleaner more refined grade. Knots are larger and cracks should be expected (see below for info). Complimentary filler will be used where required, filler colour may vary slightly between batches.

N.B. The product grading criteria should be taken as an approximation only and may vary. Please ask for further details.

Final Presentation

All wood flooring products should be fitted in accordance with BS8201:2011 which is the 'Code of Practice for flooring of timber, timber products and wood-based panel products'. Failure to install in accordance with the British Standard installation instructions will void all warranties.

N.B. Please take NWFA standards for USA.

Installation

Fully Bonded	Yes (Recommended)*
Floating	Not recommended
Secret Nail	Yes

* Subject to compatible subfloor and correct installation (see our Installation Guidelines).

© This technical data sheet was written by The Reclaimed Flooring Company Limited, UK. At the time of writing and publication of the sheet, all information is specified correctly. The company reserves the right to change the specifications of this product at any time without prior notice to third parties.